



Instruction Manual PIR Motion Sensor

Wi-Fi



English

Bitte scannen Sie den QR-Code, um das deutsche Handbuch, das Installationsvideo und die Funktionseinführung zu erhalten

Escanee el código QR para obtener el manual en español, el video de instalación y la introducción de la función

Veillez scanner le code QR pour obtenir le manuel en français, la vidéo d'installation et l'introduction des fonctions

Отсканируйте QR-код, чтобы получить руководство на русском языке, видео по установке и описание функций

Scansionare il codice QR per ottenere il manuale in italiano, il video di installazione e la guida alle funzionalità. Video di installazione e funzionalità

Leia o código QR para obter o manual em português, o vídeo de instalação e a introdução das funções

Zeskanuj kod QR, aby uzyskać instrukcje, filmy instalacyjne i funkcje

QR 코드를 스캔하면 한국어 설명서, 설치 동영상, 기능 가이드를 볼 수 있습니다.

QRコードを読み取ると、日本語の説明書、インストールビデオ、機能ガイドが表示されます。

من فضلك قم بمسح رمز الاستجابة السريعة (QR-code) للحصول على دليل المستخدم باللغة العربية و فيديو التثبيت ووصف الوظائف



请扫描二维码获取中文的说明书、安装视频及功能介绍

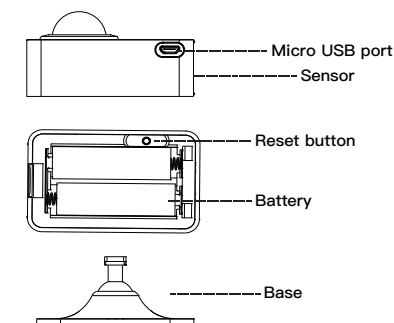
Product description

The infrared human movement sensor is a low-power infrared sensor that can detect the movement of people in the environment, thereby realizing security monitoring of monitored objects. It can also be moved, placed or pasted and installed at will. Other smart hardware products can be controlled through linkage with gateway devices, and smart lights, sockets, smart curtains and other equipment can be flexibly controlled.

Safety instructions

1. Do not disassemble, reassemble, modify or attempt to repair this product by yourself. This work should be performed by authorized professionals.
2. Product batteries should be recycled and must be recycled or disposed of separately from household waste. Dispose of batteries according to local environmental regulations.

Product Presentation



WSS-FL-PIR-A-MS-DK12

English

1

English

3

4

English

Specification

- Model: WSS-FL-PIR-A
- Size: 70*45*35.6mm
- Battery: LR6-1.5V/AA*2 (Alkaline battery)
- Micro Input: DC 5V/1A
- Standby Current: ≤51uA
- Detect Angle: 128°
- Detect Distance: ≤8m
- WiFi Type: 2.4GHz
- WiFi Standard: IEEE 802.11 b/g/n
- Working Temperature: 0°C-50 °C
- Working Humidity: 10%-85%RH
- Includes Micro charging cable, adhesive tape and screws
- Support Android 4.4 + or iOS 8.0+version

How to use

Open the back cover of battery compartment, take out the insulation sheet, or connect Micro usb port with Micro charging cable to USB power supply.

Checklist before using the device

- a. Your smartphone has connected to a 2.4GHz wifi network.
- b. You have input the correct wifi password.
- c. Your smartphone must be Android 4.4 or iOS 8.0+.
- d. Your wifi router is MAC-open.
- e. If the numbers of devices connected to the router reach the limit, you can try to disable a device to cavate the channel or try with another wifi router.

Preparation for use

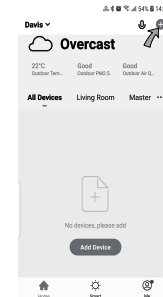
1. Download MOES App on App store or scan the QR code.



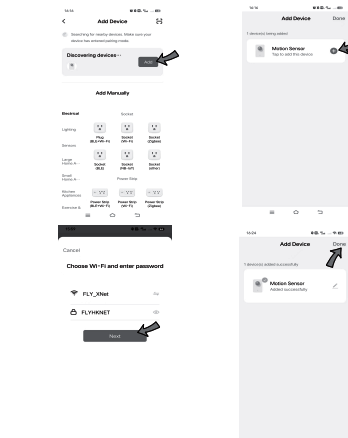
Moes application is much more compatible than Tuya smart / smart life application. It also provides a new customized service for controlling scenes through Siri, widgets and scene recommendation. (Note: Tuya smart / Smart Life app is still working, but moes app is highly recommended)

2. Registration or Log in.
 - Download "MOES" Application.
 - Enter the Register/Login interface; tap "Register" to create an account by entering your phone number to get verification code and "Set password".
 - Choose "Log in" if you already have a MOES account.

3. Connect your mobile to your Wi-Fi router, click "+" at the upper right corner of home page, then click "Add Device".



4. 1) Bluetooth Mode: The app advises you to turn on the bluetooth in your mobile, enter wifi name and password, it will search nearby device, and connect the motion sensor automatically.

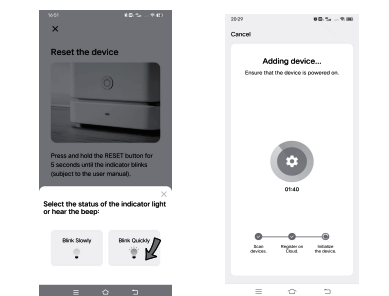
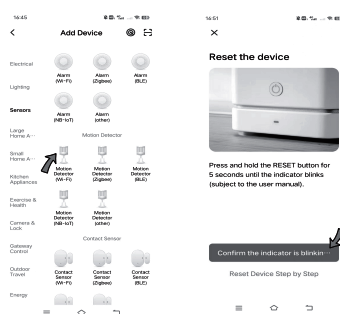


English

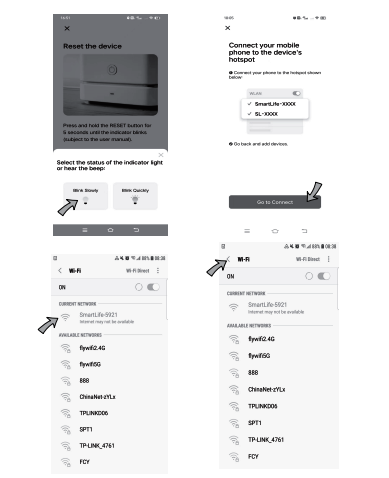
5

2) Blink Quickly:

Select "Motion Detector (Wi-Fi)" from "Sensors", enter wifi name and password, Select "Blink Quickly", make sure the LED light is blinking quickly, if not, hold the reset button about 5s till indicator is blinking quickly.



- 3) Blink Slowly: You can also select "Blink Slowly", make sure the LED indicator is blinking slowly. if not, press reset button for about 5s till the indicator is blinking slowly. Connect your mobile to the device's hotspot: "SmartLife-XXXX", then click to return to App interface, it will connect to Wi-Fi router automatically, configuration completed.



5. You can mount the sensor with adhesive tape or secure with screws on the wall.

NOTES: When you use the first time, it will alarm when the PIR sensor detects your movement. There will be 30s intervals after you leave the detection range and pass by again, it alarms.

Features

1. Remote Monitor: Provides 24-hour monitoring, you can check the status via app remotely.
2. Alarm Alert: Whenever the sensor detects someone or animal is passing by, it will send alarm to keep you alert.
3. Push Notification: Instant notification pushed to your phone immediately when movement is detected, keep you informed all the time.
4. Alarm Recording: Check all alarm records in the app, you never miss any important moments.

5. Device Sharing: You can share your added sensors to your family or friend, so they can also monitor the status.

Declaration of conformity

Hereby, WENZHOU NOVA NEW ENERGY CO., LTD declares that the radio equipment type WSS-FL-PIR-A is in compliance with Directive 2014/53/EU, 2014/30/EU, 2011/65/EU. The full text of the EU declaration of conformity is available at the following internet address: <https://www.moestech.com/blogs/news/wss-fl-pir-a>

Trouble shooting

If you have problems installing or operating your device, please review its product data sheet: <https://www.moestech.com/blogs/news/wss-fl-pir-a>

WARRANTY INSTRUCTIONS

Dear Sir or Madam, thank you for purchasing the product. We hope you'll enjoy using it. The warranty for the products in the warranty card is hereby granted as follows. As a condition of using the warranty, you must comply with the following terms and procedures:

1. Products are covered by a 24-month warranty, effective from the date of purchase of the covered product by a retail customer.
2. In order to exercise warranty rights, the purchaser must present: a) Warranty card, b) Proof of purchase (VAT invoice, financial receipt or other document confirming the actual date of purchase), unless the purchase date of the product comes from the warranty card.
3. If product quality problems occur within 24 months from the date of receipt, please prepare the product and packaging and go to the place or store where you purchased it to apply for after-sales maintenance. If the product is

damaged due to personal reasons, a certain maintenance fee will be charged.

4. We recommend that you properly protect the goods when delivering them to the guarantor - for this purpose, we recommend that you use the original packaging with padding to ensure safe transportation. If you choose to use replacement packaging, we recommend that you ensure that the product is adequately protected from damage during shipping. We recommend that you place an appropriate sticker on your packaging indicating the product's susceptibility to impact, such as "Warning Glass".
5. Reported defects covered by the warranty will be considered immediately and no later than 14 days from the date of delivery of the goods to the Guarantor.
6. After checking and determining the legality of the warranty claim, the Guarantor's services will repair the product within a reasonable time, not exceeding 30 days from the date of delivery of the goods to the

Guarantor. However, if hard-to-find spare parts are required, this deadline may extend the time it takes to deliver the part from the manufacturer's factory.

7. The warranty does not include the performance of maintenance and similar operations specified in the user manual, and users are obliged to do it themselves.
8. If defects occur due to natural wear and tear during use, the warranty does not cover it.
9. The warranty does not cover:
 - a) Mechanical damage caused by the user's fault and product defects caused by such damage.
 - b) Damage caused by improper use of the product.
10. The rights under the guarantee will expire in the following circumstances:
 - a) Remove the warranty seal from the product.
 - b) Remove the serial number from the product.
 - c) Take action to eliminate physical defects in the product outside of authorized service.
 - d) Use non-original parts and consumables.

WARRANTY CARD

Product Information

Product Name _____

Product Type _____

Purchase date _____

Warranty Period _____

Dealer Information _____

Customer's Name _____

Customer Phone _____

Customer Address _____

Maintenance Records

Failure date	Cause Of Issue	Fault Content	Principal

Thank you for your support and purchase at we Moes, we are always here for your complete satisfaction, just feel free to share your great shopping experience with us.



If you have any other need, please do not hesitate to contact us first, we will try to meet your demand.

FOLLOW US



UK REP: EVATOST CONSULTING LTD
Address: Suite 11, First Floor, Moy Road Business Centre, Taffs Well, Cardiff, Wales, CF15 7QR
Tel: +44-292-1680945
Email: contact@evatmaster.com

EC REP: E-CrossStu-GmbH
Mainzer Landstr. 69, 60329 Frankfurt am Main
Email: E-crossstu@web.de
Tel: +4969332967674
Made in China

Manufacturer: WENZHOU NOVA NEW ENERGY CO., LTD
Address: Power Science and Technology Innovation Center, NO.238, Wei 11 Road, Yueqing Economic Development Zone, Yueqing, Zhejiang, China
Tel: +86-577-57186815
After Service Email: service@moeshouse.com

English

15

English

16

English

English

17

English

18

English

English

19

English